



The SR series on line double conversion UPS, meets today's industry standard for energy saving and low reflected harmonic pollution to the Utility. The SR series uses a field proven MPU to substantially reduce the component count. This provides greater reliability, functionally and smaller size than other designs. Using the latest high frequency techniques and quality components reliability is further increased. High system efficiency is achieved in all operation modes saving electricity.

PRINCIPLES OF WORKING

The back up series is composed by: Rectifier, Inverter, Static Switch, manual by-pass and Battery.

The Rectifier-Inverter line normally feeds the users, and the Battery is kept charged by the Rectifier.

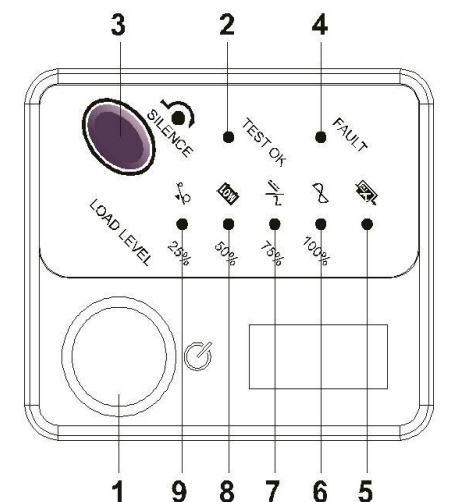
If a black out occurs, the Battery supplies power energy to users always through the Inverter. When the blackout is over, the Rectifier provides for Battery charge.

If a short circuit or an overload occurs to the users, the Static By-pass switches the load over the emergency line. When the fault is over, the Inverter feeds users.

FEATURES

- SR UPS can either be placed on the floor or inserted in a 19" Rack.;
- Double conversion online technology;
- Filtered, stabilized and regulated sine wave supply;
- Unity Input power factor;
- Wide input voltage window and input frequency window, the battery usage is minimized;
- Zero transfer time;
- Add matching battery cabinets and extend the backup time up to several hours. With its isolation conversion technology plus precision control, the optional charger can be installed in parallel up to 4 units;
- Superior overload capability;
- High battery reliability (battery test, manual and automatic);
- Optionally LCD display provides real time status and parameter readings;
- Smart battery management system monitors the battery charging and discharging status;
- Cold Start;
- Auto Restart;
- Plug & Play design;
- RS 232 standard, porta a contatti, USB, RS485 e SNMP opzionali;

CONTROL PANEL



LED display explanations:
By-pass, utility, inverter, battery low,

overload, ups fault, load level % and battery level %.

LCD display explanations (optionally):
Bypass, Boost & Buck, battery low, battery bad, fault, input voltage abnormal, overload, load level %, battery level %.

KEYBOARD

ON/OFF, battery test, load level %, battery level %.

livello batteria

TASTIERA

ON/OFF, test batteria, livello carico, livello batteria

USB



Dry contact



SNMP



INTERFACES



REAR PANEL EXPLANATION

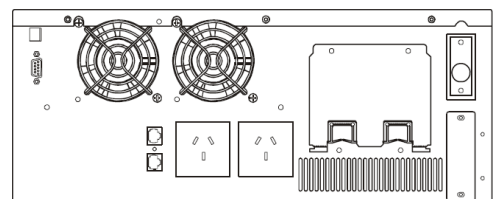
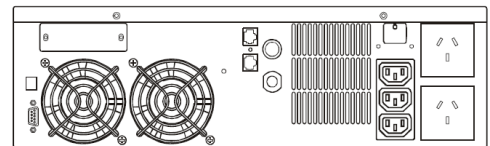
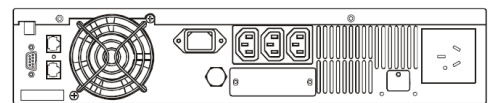
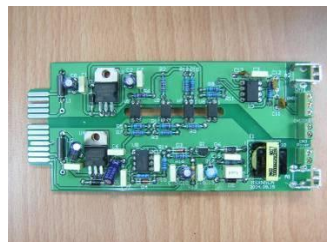
- Inlet;
- Outlets;
- AC fuse;
- fan;
- 1 x RS-232;
- Customer Options Slot;
- Plug&Play external battery terminal
- Lan protection;
- Dip Switch for output configuration;

The SR Series UPS also provides one additional customer options communication slot in addition to the standard RS232:

2nd RS232



RS485



Model	SR1000	SR2000	SR3000
Rated power VA/W	1000/700	2000/1400	3000/2100
INPUT			
Nominal voltage	230V ± 25% single phase		
Frequency	50/60Hz ± 5% auto sensing		
Input Power Factor	> 0.98		
OUTPUT			
Voltage	220/230/240V ± 2% single phase, adjustable		
Frequency	50Hz or 60Hz ± 0.5%		
Waveform	Sinusoidal		
Distortion (THD)	< 3%		
Transfer time	0 ms.		
DC start	Yes		
Crest factor	3:1		
Overload	120% for 1 minute, 150% per 10 seconds		
BATTERY			
Type	Sealed Lead Acid maintenance free		
Recharge time	8h at 90%		
Nominal voltage	36Vdc	72Vdc	96Vdc
Standard back up time	10 minutes		
Supplementary charger	Optional 200W/500W chargers for extended backup application		
PROTECTION			
Short circuit	Hold whole System		
Overheat	Switch to bypass		
Noise suppression	Complies EN50091-2		
Spike suppression	Complies EN61000-4-5		
MISCELLANEOUS			
Relative humidity	< 95% without condensing		
Operating temperature	from 0°C to + 40°C		
Noise	< 45 dBA		
Interfaces	RS232 (dry contact, RS485, USB, SNMP and EPO optionally)		
Compatible platforms	Windows 95/98/NT/2000/XP/Vista, Novell Netware, Linux		
Inlet	1 x IEC 10A		
Outlets	3x IEC; 1x Shucko	3x IEC; 2x Shucko	Terminals
Dimensions (mm)	440x385x88	440x482x132	440x482x176
Weight (kgs)	16	29	39
STANDARDS			
Safety	EN 62040-1-1		
EMC	EN 62040-2, EN 61000-3-2, EN 61000-3-3, FCC classe A		
Marks	CE, UL		

ELIT Srl reserves his right to do modifications to his products without notice.